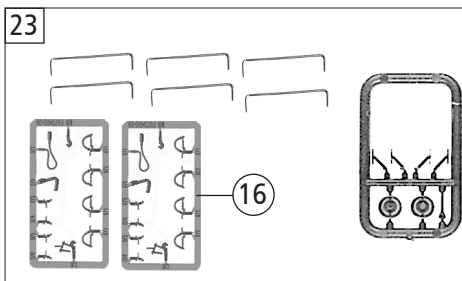
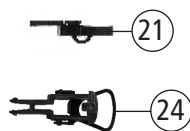
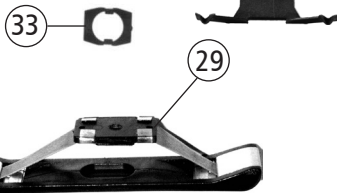
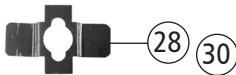
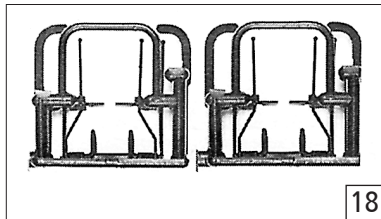
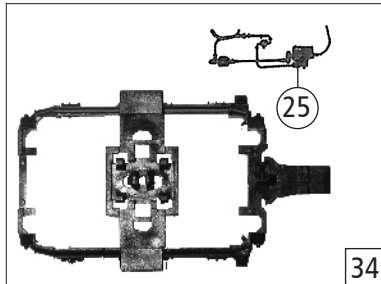
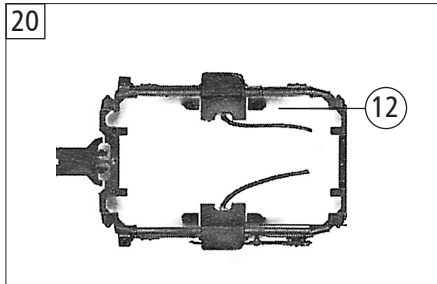
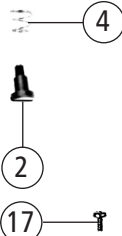
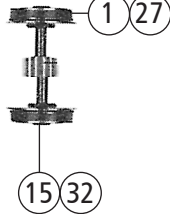
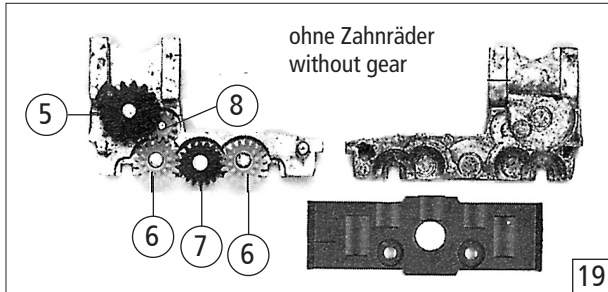
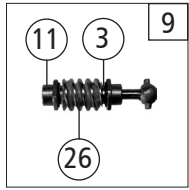


Pos. Nr. Pos.no.	Beschreibung Description	Art.-Nr. Art.no.	Preisgruppe Price bracket
70979	DB V 100	=	
70980		=	🔊
78980		~	🔊
1	Gehäuse komplett Nr. V 100 1273 Body complete no. V 100 1273	148730	18
2	Kabine komplett Nr. V 100 1273 Cabin complete no. V 100 1273	148731	20
3	Platine komplett Printed circuit assembly	141790	19
4	Kabinfenster Cabin window	94758	8
5	Führerstand Drivers cab	128213	8
6	Brückenstecker PLUX-16 Jumper	133241	10
7	Motor Motor	143272	28
8	Steuerrad Steering wheel	113975	3
9	SK - Schraube M2x5 mm SK - Screw	115205	3
10	E-Lokführer E-Loco driver	101927	6
11	Motordistanzplatte Spacer	117202	3
12	Schienenräumer Pilot frame	101356	4
13	Grundrahmen Main frame	148729	19
14	Dekoderdeckel Decoder cover	132041	4
15	Puffer flach Buffer flat	101351	4
16	Puffer gewölbt Buffer vaulted	101352	4
17	GF-Schraube M2x16 mm GF-Screw	115094	3
18	Kardanschale kurz Cardan shell short	87129	4
19	Dach Roof	94755	7
20	TS - Linsen Part set lenses	141789	8
21	Gehäuse deckel Body cover	94754	7
22	TS-LED-Abdeckung Part set-LED-covers	141792	5
Sound			
23	Sounddecoder Sound-decoder	129000	39
23	Lautsprecher Loudspeaker	129524	13
24	Soundbox Soundbox	139681	6

Änderungen in Konstruktion und Ausführung vorbehalten
We reserve the right to change the construction and specification



Pos. Nr. Pos.no.	Beschreibung Description	Art.-Nr. Art.no.	Preisgruppe Price bracket
70979	DB V 100		
70980			
78980			
1	Haftringsatz 10Stk. 8,3-10,2mm Set with traction tires 10 pieces	40068	---
2	FK-Schraube mit Gewindeauslauf FK-Screw with back taper thread	85704	4
3	Beilagscheibe Washer	86108	3
4	Konusfeder Cone spring	86202	3
5	Schneckenzahnrad doppelt Gear double	86419	6
6	Zahnrad Z=19/12 M 0.4 Gear Z=19/12 M 0.4	86424	4
7	Zahnrad Z=18 gerade M=0.4 Gear Z= 18 straight line M=0.4	86460	3
8	Zahnrad Z=12/ M 0.4 Gear Z=12/ M 0.4	86471	3
9	Schneckensatz komplett Worm set ass.	86868	13
10	Gelenkwelle Cardan shaft	87138	4
11	Lager für Schneckenachse Bearing for worm axle	89749	6
12	Radkontakt Wheel contact	89879	6
13	Radsatz ohne Haftring mit Zahnrad Wheelset without traction tires with gear	90474	11
14	Schneckendeckel Worm cover	94707	4
15	Radsatz mit 2 Haftringen mit Zahnrad Wheelset with 2 traction tires with gear	107388	12
16	TS - Bremsschläuche + Zughaken Part set of brake tubes & coupling hooks	139832	7
17	GF - Schraube M2x5 mm GF - Screw	114966	3
18	Aufstiegsatz Rear ladder set	120303	8
19	Getriebebesatz ohne Zahnräder Gear set without gears	100042	13
20	Drehgestellblende kurzer Vorbau komplett Bogie frame short front end completely	94773	12
21	Kurzkupplung-Vorentkupplung Short coupling- pre-uncoupling	115550	6
22	Bremsbackensteckteil Brake plug-in part	94775	4
23	Zurüstbeutel Bag with accessories	143275	13
24	Standardkupplung Standard coupling	89246	6
25	DG-Blendensteckteil Bogie-cover plug-in parts	107102	4
26	Schnecke Wormgear	86704	6
AC - Wechselstrom			
27	Haftringsatz 10Stk. 10,3-12,4mm Set with traction tires 10 pieces 10,3-12,4	40074	---
28	Kontaktblech Contact plate	108722	4
29	Schleifer Slider	86030	14
30	Achslager Axle bearing	89883	6
31	Radsatz ohne Haftring ohne Zahnrad Wheelset w/o traction tires w/o gearwheel	90388	7
32	Radsatz mit 2 Haftringen mit Zahnrad AC Wheelset w. 2 traction tires w. gearwheel	90476	12
33	Schleiferhalter Collector holder	95687	5
34	Blende vorne AC Bogie AC	94779	12